

Technical Sheet
KNX Brightness and Motion Sensor

Product no.: UP05201



The worldwide STANDARD for home and building control

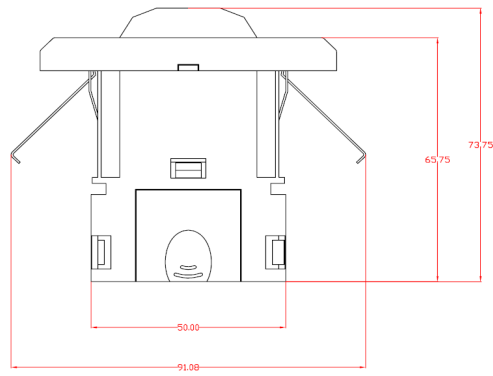
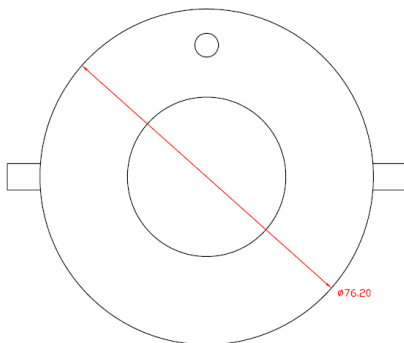
CHARACTERISTICS

- Illumination measure: 0lux~65535lux
- Movement detector area: (4m~5m) high sensitivity, (5m~7m) low sensitivity
- Illumination output with 3types data, the values can be sent cyclically
- Movement detector output with 3types data, the values can be sent cyclically
- Illumination with threshold function
- Movement detector sensitivity with level 1~10
- Logic (AND, OR, XOR) function among illumination value, movement detector value and input value, logic output with 3 data types, the output values can be sent cyclically
- Can be set Master-Slave interworking, the master output with 3 data types
- Illumination disabled, Movement detector disabled and logic disabled function

PARAMETERS

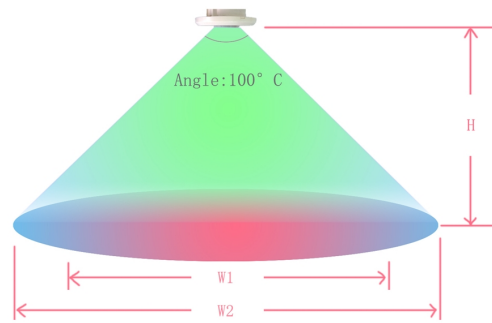
| | | |
|----------------------|---|---------------------------------|
| Power supply | —Operation voltage | 21-30V DC via the EIB bus |
| | —Current consumption | Max. 12mA |
| | —Power consumption | Max. 360mW |
| Connection | —EIB / KNX | Bus connecting terminal |
| Operation and | —LED(red) and | Assigning the physical address |
| | —LED(green) flashing | Indicate application running ok |
| IP Grade | —IP 20, EN 60529 | |
| Temperature | —Operation | -5°C ... +45°C |
| | —Storage | -25 °C ...+55°C |
| | —Transport | -25 °C ...+70°C |
| Environment | —humidity | <93%,no condensation |
| Mounting | —surface mounted | |
| CE | —In accordance with the EMC guideline and the low voltage guideline, EN50 090-2-2 | |
| Certification | —EIB/KNX | |

DIMENSIONS



| Model | Dimension | Weight |
|---------|------------|--------|
| UP05201 | 91x74x76mm | 0.05kg |

INDUCTION SCHEMATIC DIAGRAM



H: Range 2.5m~3m, recommended 2.7m

W1: Area 4m~5m, High sensitivity

W2: Area 5m~7m, max. Reaction area

ATTENTION BEFORE INSTALLING

1. Keep it far away Frigg, air conditioning, and stovepipe, where temperature changes violently.
2. In a certain temperature, speed of wind affects a little.
3. If ambient temperature approaches body temperature, the sensor will lose efficacy.
4. Between the sensor and detected area must not have stumbling block.
5. Sensor cannot be directly on the windows and doors, and where there is direct sunlight. Air flow and dramatic changes in light will case sensor generates fault alarm.

IMPORTANT INFORMATION

Installation and commissioning of the device may only be carried out by trained electricians. The relevant standards, directives, regulations and instructions must be observed when planning and implementing the electrical installation.

- Protect the device against moisture, dirt and damage during transport, storage and operation!
- Do not operate the device outside the specified technical data (e.g. temperature range)!

Should the device become soiled, it may be cleaned with a dry cloth. If this does not suffice, a cloth lightly moistened with soap solution may be used. On no account should caustic agents or solvents be used.